

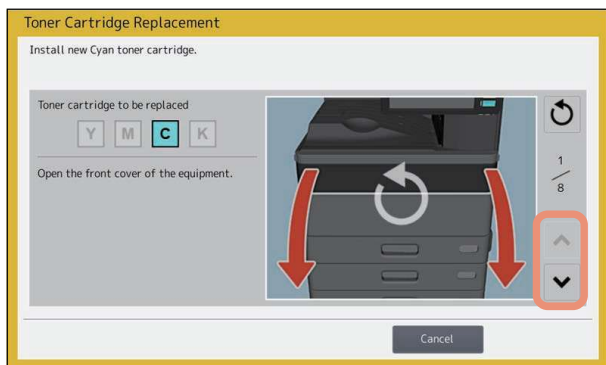


Replacing a Toner Cartridge

When the toner cartridge runs out, the message “Install New *** (color name) toner cartridge” appears. Replace the toner cartridge following the procedure below when you see this message.

The guidance is displayed on the touch panel. Press  or  to scroll the pages.



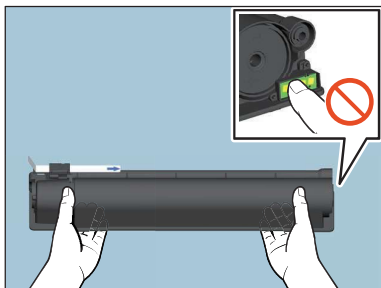
WARNING

Never attempt to incinerate toner cartridges.

Dispose of used toner cartridges and waste toner boxes in accordance with local regulations.

Do not touch the terminal of the toner cartridge.

This may cause the equipment not to recognize the toner cartridge or may damage the terminal.



Tip

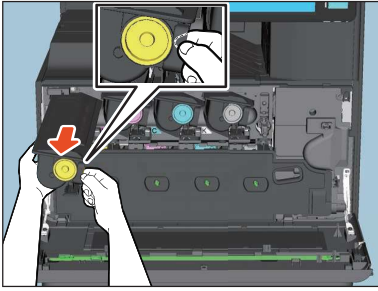
Some toner is still left in the toner cartridge while the message “Toner near Empty” is displayed. You do not have to replace the toner cartridge yet.

■ Color models

1 Open the front cover of the equipment.



-
- Put your fingers on the right side of the toner cartridge and pull it out supported with your left hand.

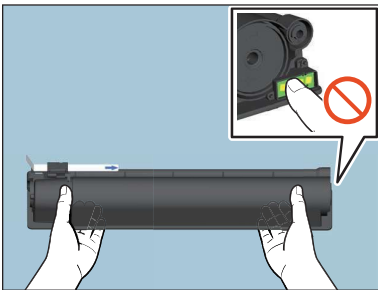


⚠ WARNING

Never attempt to incinerate toner cartridges.

Dispose of used toner cartridges and waste toner boxes in accordance with local regulations.

- Hold the new toner cartridge with its seal side up.



Note

Do not touch the metal contact on a circuit board.

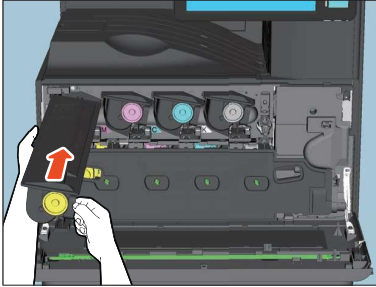
- Shake the new toner cartridge strongly with its seal side up to loosen the toner inside.



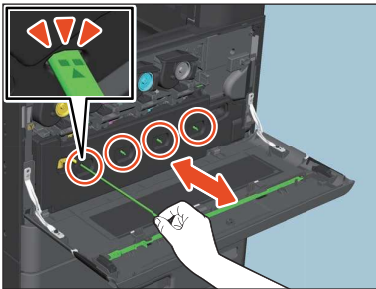
- Pull the seal straight out in the direction of the arrow.



6 Align the new toner cartridge to the guide. Insert it up to the black line.



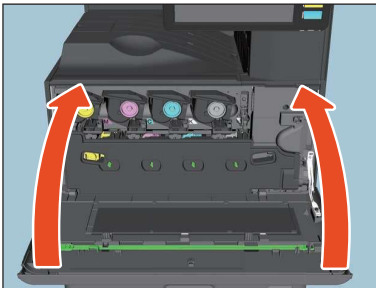
7 Pull out the cleaner until the mark appears and return it. Repeat this 3 times for each of the 4 colors.



Note

The cleaner cannot be removed by design. Pulling it out forcibly may cause malfunction.

8 Close the front cover pressing both edges.



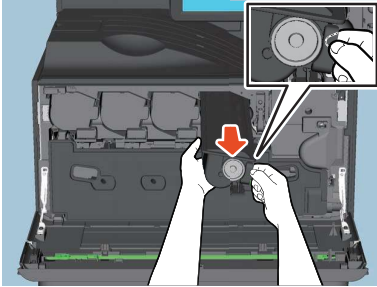
■ **Monochromatic models**

□ **e-STUDIO5528A/6528A**

1 Open the front cover of the equipment.



- Put your fingers on the right side of the toner cartridge and pull it out supported with your left hand.

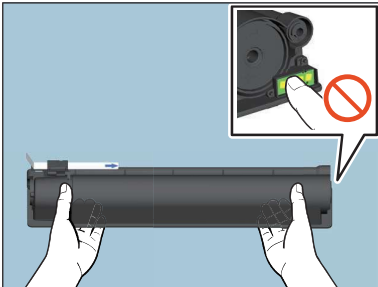


⚠ WARNING

Never attempt to incinerate toner cartridges.

Dispose of used toner cartridges and waste toner boxes in accordance with local regulations.

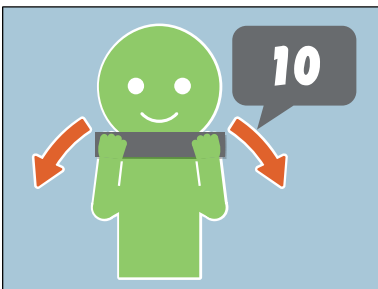
- Hold the new toner cartridge with its seal side up.



Note

Do not touch the metal contact on a circuit board.

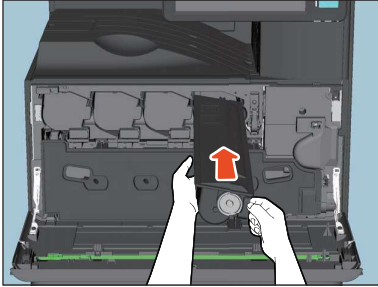
- Shake the new toner cartridge strongly with its seal side up to loosen the toner inside.



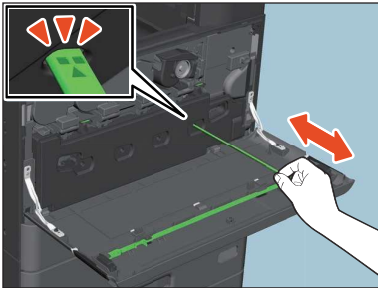
- Pull the seal straight out in the direction of the arrow.



6 Align the new toner cartridge to the guide. Insert it up to the black line.



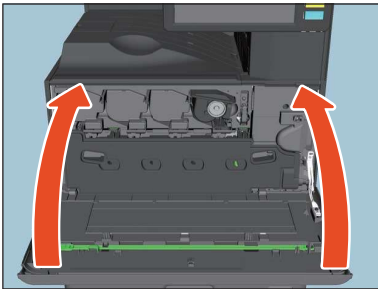
7 Pull out the cleaner until the mark appears and return it. Repeat this 3 times.



Note

The cleaner cannot be removed by design. Pulling it out forcibly may cause malfunction.

8 Close the front cover pressing both edges.

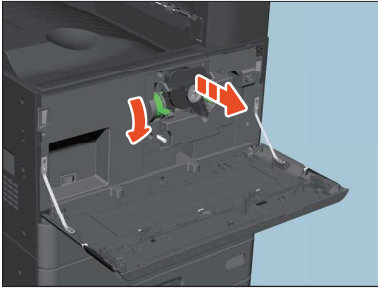


□ e-STUDIO2528A/3028A/3528A/4528A

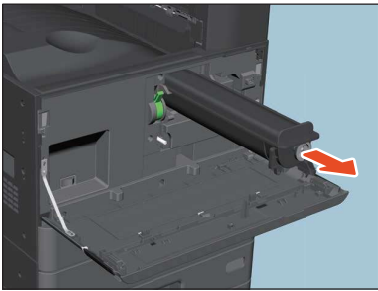
1 Open the front cover of the equipment.



- 2 Hold down the green lever.**
The toner cartridge is slightly pushed out.



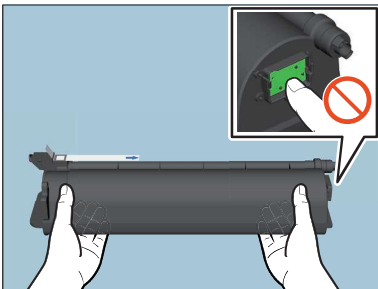
- 3 Pull out the toner cartridge.**



⚠ WARNING

Never attempt to incinerate toner cartridges.
Dispose of used toner cartridges in accordance with local regulations.

- 4 Hold the new toner cartridge with its seal side up.**



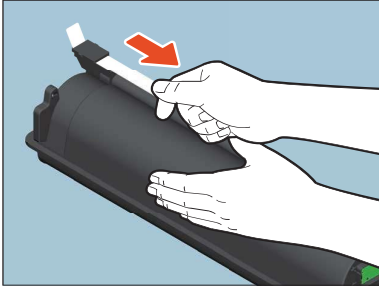
Note

Do not touch the metal contact on a circuit board.

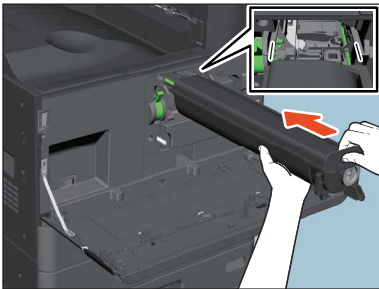
- 5 Shake the new toner cartridge strongly with its seal side up to loosen the toner inside.**



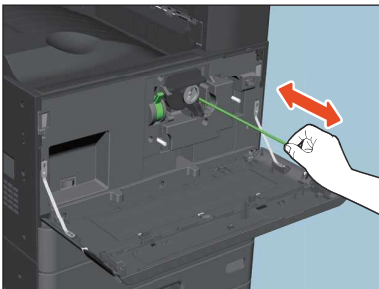
6 Pull out the seal in the direction of the arrow.



7 Insert the toner cartridge along the rail.
Insert the toner cartridge until it clicks.



8 Carefully pull the cleaner out until it comes to a stop, and then carefully reinsert it straight into its original position. Repeat this step a couple of times.



Note

Check that the cleaner's knob is fully inserted after cleaning.

9 Close the front cover pressing both edges.

